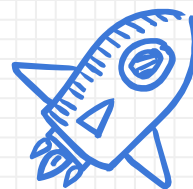


8th Grade Elective Selection Class of 2026



FRESHMAN COURSE CATALOG

Course Catalog

(click the link to access the DHS Freshman Course Catalog)

OR

Visit the DHS website > Guidance tab > Course Selection

Students should review descriptions of courses they are selecting for electives or alternates.

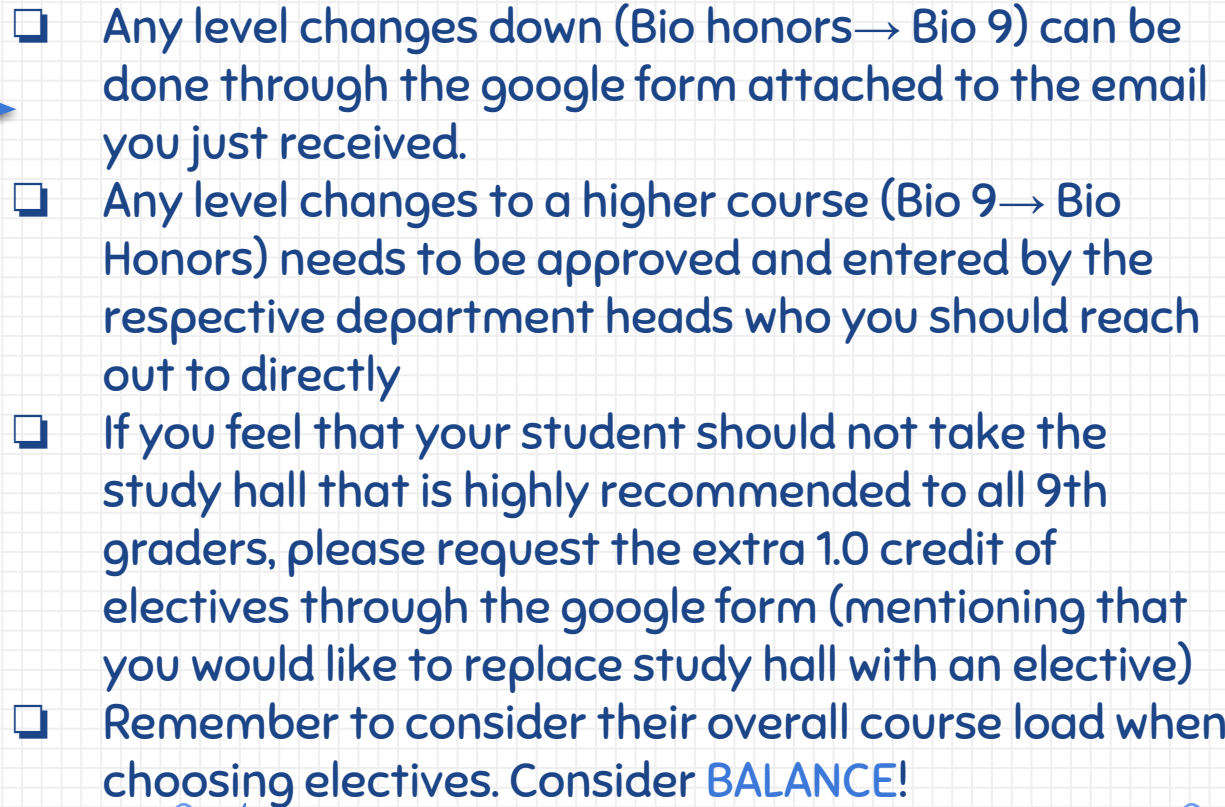


Typical 9th Grade Schedule

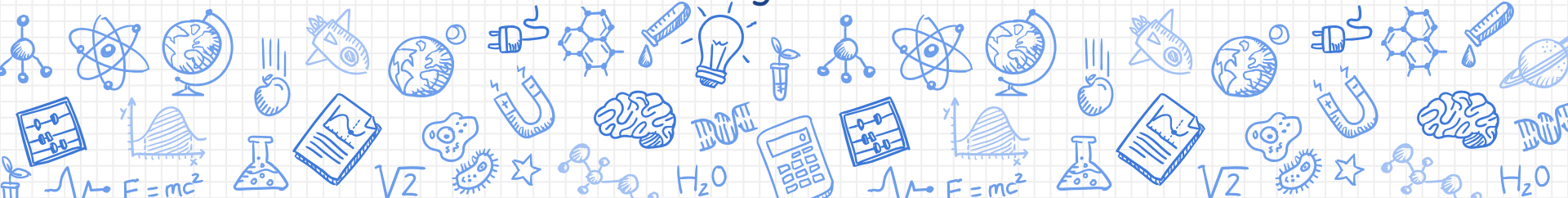
1. English 9 or English 9 accelerated
2. Biology or Biology honors
3. Math (Algebra I, Geometry, Algebra II)
4. Western Civilization
5. PE & Health / Biology Lab
6. World Language -----> Entered the week of 2/7 only if they didn't previously take a language
7. Elective -----> entered in classes the week of 2/7
8. Study Hall (is not entered yet)

****All 9th graders MUST take SIX classes plus PE/Health each semester.****





CHOOSE WISELY!



How to see course recommendations in Aspen

Pages **Family** Academics Groups Calendar

Students :

Details
Contacts
Daily Attendance
Health
Conduct
Transcript
Assessments
Schedule
Schedule
Requests Details
Membership

Options ▾ Reports ▾ Help ▾ Search on CrsNo 🔍 🗑️ 📄 📊 🖨️

<< Exit entry mode

2022-2023 - Requests: 16 primary, 0 alternate - Scheduled: 89%

Instructions

Primary requests

	Subject area	SchoolCourse > CrsNo	SchoolCourse > Description	SecType	A
👉 Select...	English	ENG102-130A	300 English 9		N
		ENG102-130B	300 English 9		N
👉 Select...	Health/PE	PE-1001	Health/PE 9 S1		N
		PE-801	Health/PE 9 S2		N
👉 Select...	History	HST102-130A	300 Western Civ. 1		N
		HST102-130B	300 Western Civ. 2		N

1. Find your 8th grader under “Family”

2. Click “schedule” then “Requests”



Sample Recommendation List

	Subject area	SchoolCourse > CrsNo	SchoolCourse > Description	SecType	Alternate?	Priority	Alt 1 > CrsNo	Alt 2 > CrsNo	Credit
Select...	English	ENG102-130A	300 English 9		N	0			0.5
		ENG102-130B	300 English 9		N	0			0.5
Select...	Health/PE	PE-1001	Health/PE 9 S1		N	0			0.25
		PE-801	Health/PE 9 S2		N	0			0.25
Select...	History	HST102-130A	300 Western Civ. 1		N	0			0.5
		HST102-130B	300 Western Civ. 2		N	0			0.5
Select...	Math	MAT302-530A	300 Geometry		N	0			0.5
		MAT302-530B	300 Geometry		N	0			0.5
Select...	Science	SCI104-144A	400 Biology 1 Honors		N	0			0.5
		SCI104-144B	400 Biology 1 Honors		N	0			0.5
Select...	Special Programs	SPR101-590B	900 IDEA Program		N	0			0.25
Select...	World Language	FLG102-530A	300 French 2		N	0			0.5
		FLG102-530B	300 French 2		N	0			0.5
Select...	Electives 9	COM301-590X	900 Computer Science		N	0	TEC501-590X	ART304-590X	0.5
		TEC301-590X	900 Fundamentals of Engineering		N	0	TEC102-590X	COM301-591X	0.5
		SPR101-590A	900 IDEA Program		N	0			0.25

Google Form for course changes due by March 11th –
this is a FIRM deadline.

<https://docs.google.com/forms/d/1eJA-CbX9L6G5nKGUbx5RLuKgwJz9sKPZwb5nBMWSASY/edit?ts=62054d52>